






401/3 Dune Walk Woollooware NSW

2  2  1 

Positioned on the fourth floor with a sun-drenched Aspect, this stunning apartment presents a fantastic opportunity for home buyers or the astute investor.

Type : Apartment

Price : \$1.07m - \$1.12m

View : <https://www.burkeproperty.com.au/8067883>

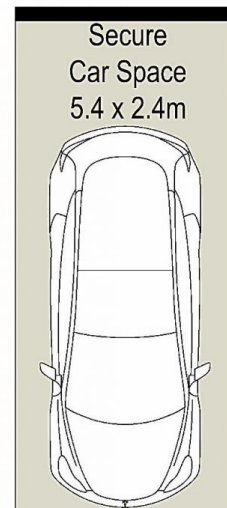
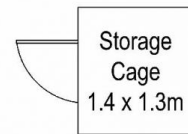
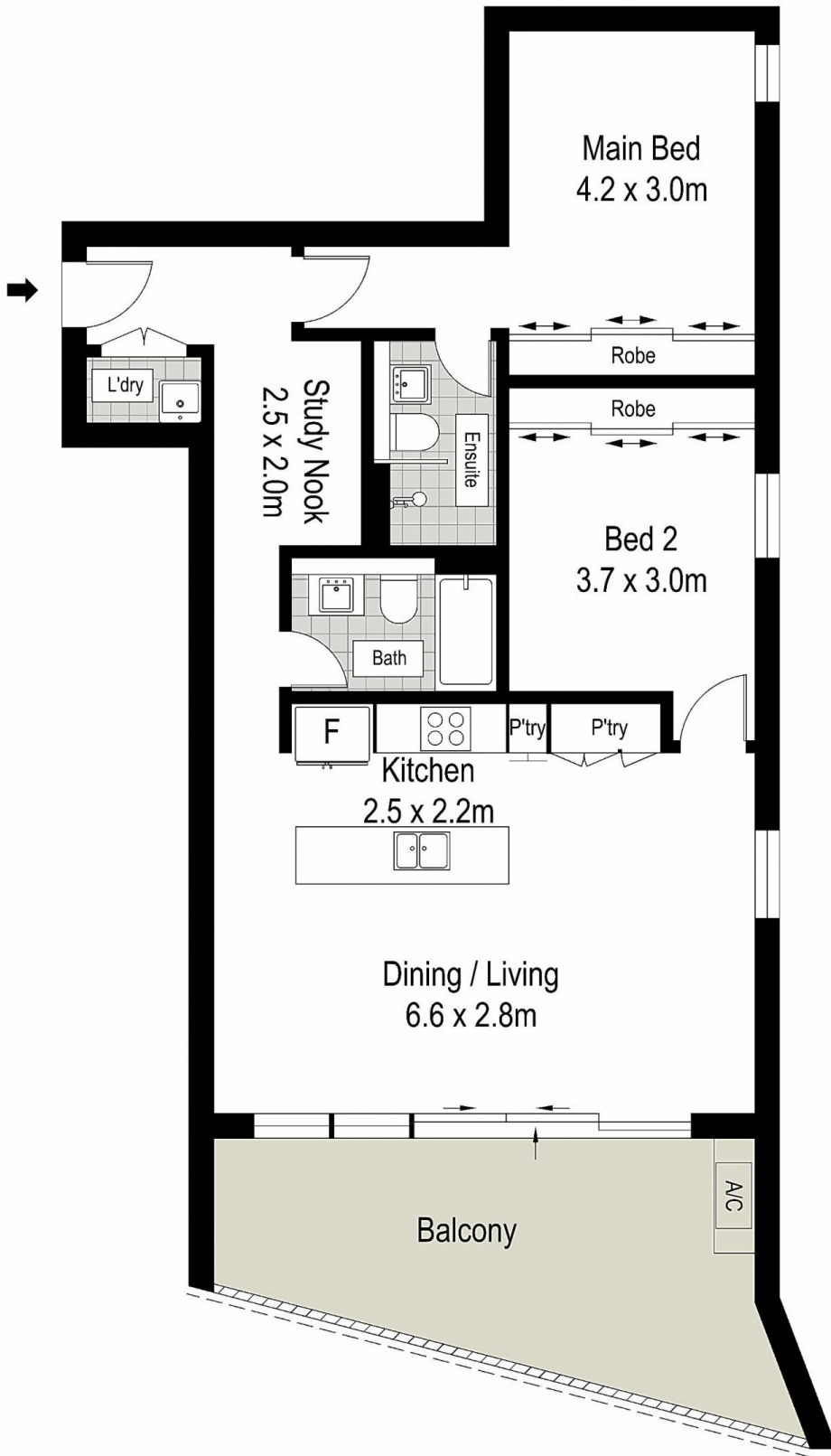
Features:

- 2 well-proportioned bedrooms, master with ensuite.
- Light filled interiors throughout. Ducted air conditioning
- Quality hardwood flooring.
- Flexible floorplan with additional study nook
- Internal laundry facilities, ample storage options.
- Oversized West facing balcony with outlook over Solander oval and water views to North.
- Entertainer's kitchen with quality appliances and breakfast bar



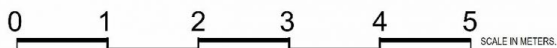
David Kennedy
02 9544 1111

[For full version visit the website](https://www.burkeproperty.com.au)



LEVEL FOUR

LOWER GROUND



DISCLAIMER: THIS IS FOR ILLUSTRATIVE PURPOSES ONLY, ALL DIMENSIONS ARE APPROXIMATE AND IT DOES NOT CONSTITUTE PART OF ANY LEGAL DOCUMENTS.

401 / 3 Dune Walk, Woolooware

